

# Repeater of 1, 2, 3 level (EM4007)

The 1st level repeater collects the data by radio from the 2d level repeaters and retransmits it to the GateWay. The 2d level repeater collects data from RF meters and retransmits it to the 1st level repeaters. The 3d level repeater is used in the case when one/several meters don't fall into the 2d level repeaters. The 3d level repeater obtains data from missing RF meters and transfers it to the 1st / 2 d levels repeaters or to the GateWay. Repeater RF has universal power - from supply 220/110 VAC with accumulator battery or from solar battery with accumulator battery. Each 15 minutes the repeater broadcasts voltage of accumulator battery.

Parameters	Description
<b>Description</b>	<b>Repeater RF EM4007</b>
<b>Box size</b>	250x250x70 mm
<b>Solar battery size</b>	400x232x40 mm
<b>Antenna lenth</b>	600 mm
<b>Unit Weight</b>	3 kg
<b>Power Supply</b>	Lead accumulator battery 12 VDC 2,2 A*h - with charge from solar battery or power 220VAC
<b>Operational Life without charge</b>	14 days
<b>RF Transmit Bitrate</b>	10.0 kbps
<b>Frequencies</b>	RF - FSK 433/868/900 MHz
<b>Configuration Storage</b>	Non-volatile memory
<b>Operating Temperatures</b>	-40° C to +85° C
<b>Environmental</b>	IP-68
<b>Humidity</b>	Max. 95%

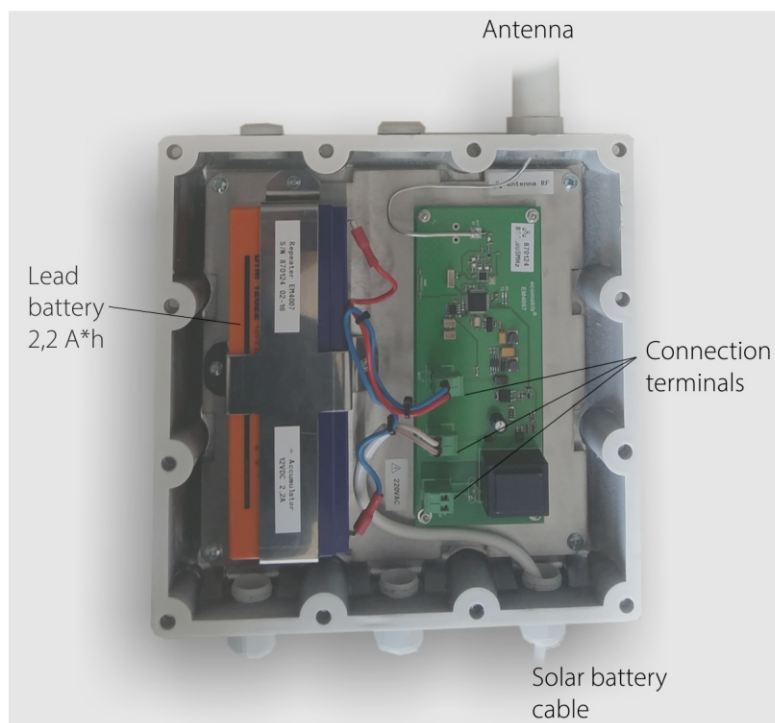
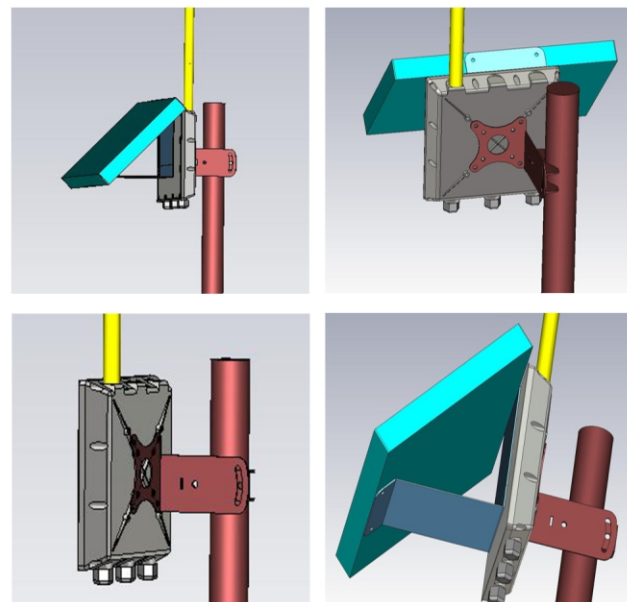


Table of consumption  
(in the different modes)

Parameter	Consumption	Time duration
<b>Sleep mode</b>	0,02 mA	
<b>RF-transmit</b>	30 mA	0,045 sec

Installation on site



Signals of connection terminals

<b>Battery</b>	+	Lead battery connection	
	-		
<b>Solar</b>	+	Solar battery connection	
	-		
<b>Power</b>	L	Power supply 220 VAC connection	
	N		